

DBM Trio 2022 Berlin

City Bowling Hasenheide



Oil Pattern Distance:	40 Feet	Reverse Brush Drop:	40 Feet	Oil Per Board:	40 uL
Forward Oil Total:	11.68 mL	Reverse Oil Total:	9.48 mL	Volume Oil Total:	21.16 mL
Forward Boards Crossed:	292 Boards	Reverse Boards Crossed:	237 Boards	Total Boards Crossed:	529 Boards

	Start	Stop	Loops	Speed	Crossed	Start	End	Feet	T.Oil
1	2L	2R	3	18	111	0.0	5.1	5.1	4440
2	10L	10R	4	18	84	5.1	15.3	10.2	3360
3	10L	10R	3	18	63	15.3	22.8	7.6	2520
4	12L	12R	2	18	34	22.8	29.0	6.1	1560
5	2L	2R	0	22	0	26.0	32.0	4.0	0
6	2L	2R	0	30	0	32.0	40.0	6.0	0

	Start	Stop	Loops	Speed	Crossed	Start	End	Feet	T.Oil
1	2L	2R	0	30	0	40.0	34.0	-6.0	0
2	11L	11R	5	22	95	34.0	18.5	-15.5	3800
3	10L	10R	5	18	105	18.5	5.8	-12.7	4200
4	2L	2R	1	14	37	5.8	3.9	-1.9	1480
5	2L	2R	0	14	0	3.9	0.0	-3.9	0

Conditioner:
Type In or Select
One

TransferType:
Type In or Select
One

Forward



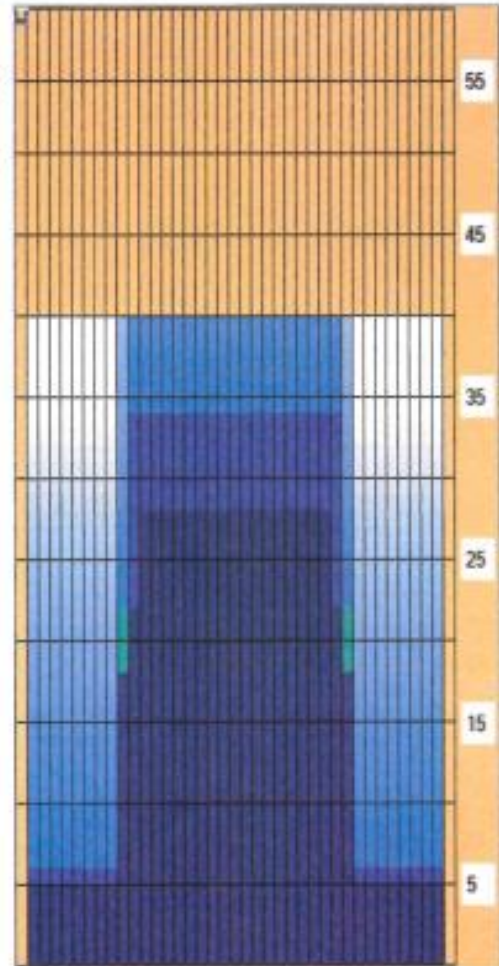
Reverse



Combined



Buff



Dieses Oelmuster wurde uploaded von Schlitz #1 In Lane Machine On 16.05.2019 19:27

Item	3L-7L:18L-18R	8L-12L:18L-18R	13L-17L:18L-18R	19L-19R:17R-13R	18L-18R:12R-8R	18L-18R:7R-3R
Description	Outside Track/Middle	Middle Track/Middle	Inside Track/Middle	Middle: Inside Track	Middle/Middle Track	Middle/Outside Track
Track Zone Ratio	5.75	1.69	1	1	1.69	5.75

